

Let **UK** Home

**1 Bedrooms**

**Flat**

**Located  
in Birmingham**

**£195,000**



[pmadmin@letukhome.co.uk](mailto:pmadmin@letukhome.co.uk)

<https://www.letukhome.co.uk/>

0121 828 8955



# 38 Windmill Street Birmingham

B1 1FZ



Let UK Home are excited to offer this spectacular one bedroom apartment in the heart of The Axium, the sought-after location of central Birmingham.

This property comprises a large bright open plan kitchen and living room, one double bedrooms with wardrobes, a large bathroom and ample storage.

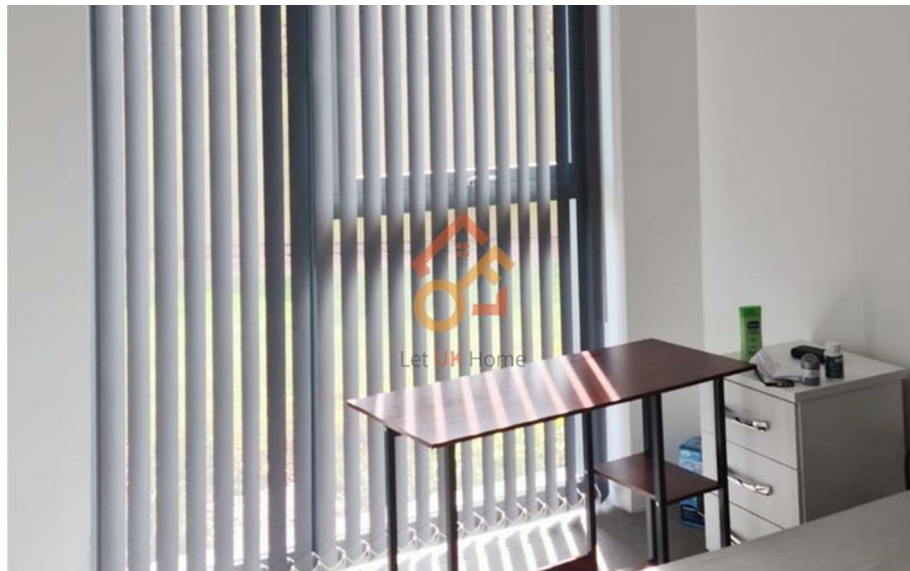
Residents of this exceptional development will have exclusive use of the private screening room, reception room and public terrace. Furthermore, residents will also benefit from a concierge and an unrivalled selection of shops, bars, restaurants, leisure facilities and beautiful courtyards.

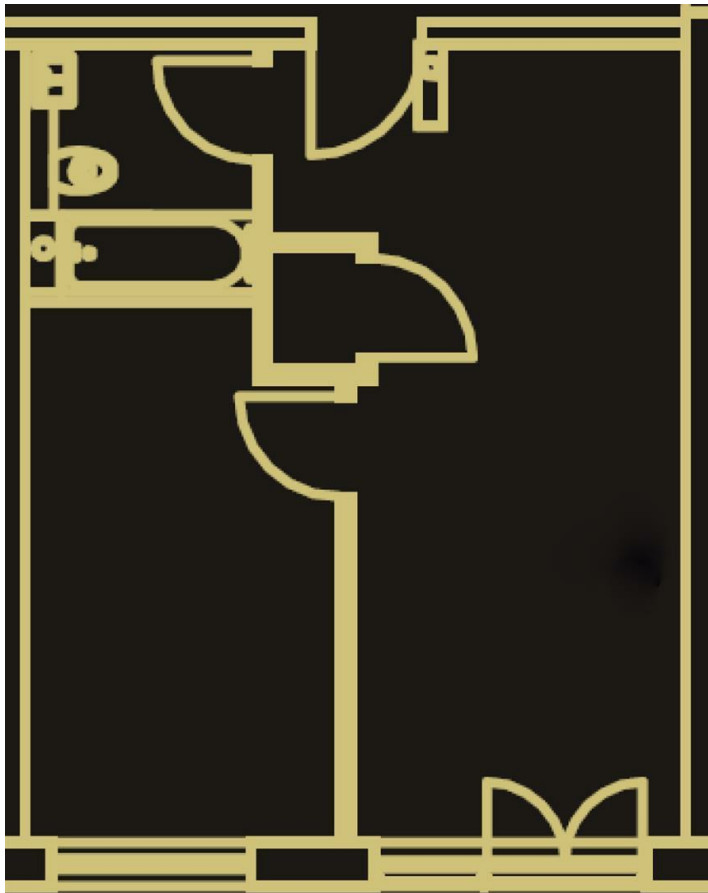
The apartment is adjacent to Birmingham New Street Station and the business district, within walking distance to Chinatown, and close to the new business district Arena Central and the large-scale redevelopment area Paradise. There are complete retail stores, restaurants, banks, and supermarkets surrounding the apartment. The large shopping malls Bullring & Grand Central and Mailbox, as well as many department stores including Selfridges, House of Fraser, John Lewis, M&S, etc. are all within walking distance of the apartment.

# 38 Windmill Street Birmingham

£195,000 Leasehold

- Ground Floor
- 24h Security
- Close to Local Shops
- CCTV
- Concierge Service
- Cinema & Game Room
- Close to Transport Links
- EPC Rating: B





Let **UK** Home

Let UK Home  
JQ Modern 120 Vyse St  
Birmingham  
B18 6NF

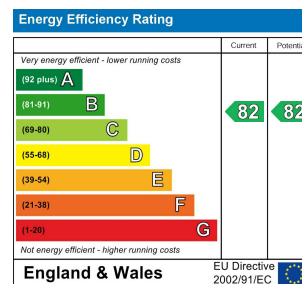
0121 828 8955

[pmadmin@letukhome.co.uk](mailto:pmadmin@letukhome.co.uk)

### Council Tax Band:

### Local Authority:

Agents Note: Whilst every care has been taken to prepare these particulars, they are for guidance purposes only. All measurements are approximate and are for general guidance purposes only and whilst every care has been taken to ensure their accuracy, they should not be relied upon and potential buyers/tenants are advised to recheck the measurements.



<https://www.letukhome.co.uk/>